

DECK & PATIO - CIRCLE

3011

WAC

LANDSCAPE LIGHTING

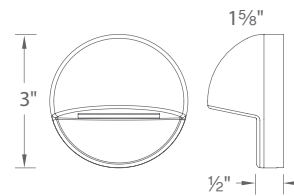


Fixture Type:

Catalog Number:

Project: _____

Location: _____



PRODUCT DESCRIPTION

Deck and patio light with superb forward-throw light distribution

FEATURES

- IP66 rated, Protected against powerful water jets
- Translucent lens provides for uniform diffused light output
- Solid diecast brass or corrosion resistant aluminum alloy
- ADA compliant
- Maintains constant lumen output against voltage drop
- UL 1838 Listed

SPECIFICATIONS

Input: 9-15VAC (Transformer is required)
Power: 2.8W / 4.6VA
Brightness: 60 lm
CRI: 90+
Rated Life: 50,000 hours

ORDERING NUMBER

3011	Circle	Color Temp		Finish	
		27	2700K	BBR	Bronze on Brass
		30	3000K	BK	Black on Aluminum
				BZ	Bronze on Aluminum
				WT	White on Aluminum

3011-_____

Example: 3011-30BZ

waclighting.com
Phone (800) 526.2588
Fax (800) 526.2585

Headquarters/Eastern Distribution Center
44 Harbor Park Drive
Port Washington, NY 11050

Central Distribution Center
1600 Distribution Ct
Lithia Springs, GA 30122

Western Distribution Center
1750 Archibald Avenue
Ontario, CA 91760

DECK & PATIO - CIRCLE

3011

WAC

LANDSCAPE LIGHTING

Magnetic Transformers

*Stainless Steel, 12-15V output, IP65 rated, UL 1838 listed
See transformer spec sheet for details and its accessories*

9075-TRN-SS
75W Max

9150-TRN-SS
150W Max

9300-TRN-SS
300W Max

9600-TRN-SS
600W Max



TESTED MAGNETIC LOW VOLTAGE (MLV) DIMMERS

Luminaire	Dimmer					
	Manufacturer	Family	Model	Power Rating	Range*	Note
3011	Lutron	Diva	DVLV-600	600W	33% - 100%	Output maxes at 50% dimming level
		Skylark	SLV-600P	600W	28% - 100%	Output maxes at 50% dimming level
		Skylark	S-10P	1000W		Not recommended

*Low end of this range is determined by output current which may not directly translate to the perceived light output

WAC Lighting fixtures are compatible with a variety of dimmers. For your convenience we have included a compatibility chart showing dimmers which have been tested with our products. The recommended list below is based upon testing conducted in a lab, and the results can vary in certain field applications due to a number of factors. Exclusion from the list does not imply incompatibility, just that it has not been tested by WAC Lighting. Please reference the dimmer manufacturer's instructions for installation, or contact a WAC lighting professional at 800-526-2588.

waclighting.com
Phone (800) 526.2588
Fax (800) 526.2585

Headquarters/Eastern Distribution Center
44 Harbor Park Drive
Port Washington, NY 11050

Central Distribution Center
1600 Distribution Ct
Lithia Springs, GA 30122

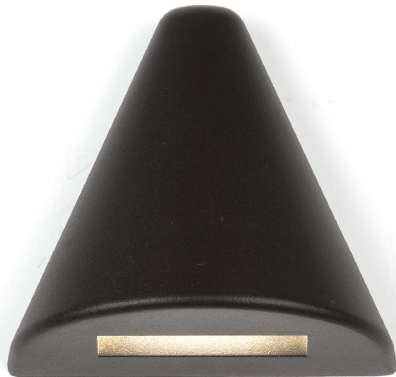
Western Distribution Center
1750 Archibald Avenue
Ontario, CA 91760

DECK & PATIO - TRIANGLE

3021

WAC

LANDSCAPE LIGHTING

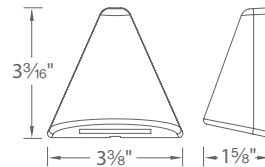


Fixture Type:

Catalog Number:

Project: _____

Location: _____



PRODUCT DESCRIPTION

Deck and patio light with superb forward-throw light distribution

FEATURES

- IP66 rated, Protected against powerful water jets
- Translucent lens provides for uniform diffused light output
- Solid diecast brass or corrosion resistant aluminum alloy
- ADA compliant
- Maintains constant lumen output against voltage drop
- UL 1838 Listed

SPECIFICATIONS

Input: 9-15VAC (Transformer is required)
Power: 2.8W / 4.6VA
Brightness: 60 lm
CRI: 90+
Rated Life: 50,000 hours

ORDERING NUMBER

		Color Temp		Finish	
3021	Triangle	27	2700K	BBR	Bronze on Brass
		30	3000K	BK	Black on Aluminum
				BZ	Bronze on Aluminum
				WT	White on Aluminum

3021-_____

Example: 3021-30BZ

waclighting.com
Phone (800) 526.2588
Fax (800) 526.2585

Headquarters/Eastern Distribution Center
44 Harbor Park Drive
Port Washington, NY 11050

Central Distribution Center
1600 Distribution Ct
Lithia Springs, GA 30122

Western Distribution Center
1750 Archibald Avenue
Ontario, CA 91760

DECK & PATIO - TRIANGLE

3021

WAC

LANDSCAPE LIGHTING

Magnetic Transformers

*Stainless Steel, 12-15V output, IP65 rated, UL 1838 listed
See transformer spec sheet for details and its accessories*

9075-TRN-SS
75W Max

9150-TRN-SS
150W Max

9300-TRN-SS
300W Max

9600-TRN-SS
600W Max



TESTED MAGNETIC LOW VOLTAGE (MLV) DIMMERS

Luminaire	Dimmer					
	Manufacturer	Family	Model	Power Rating	Range*	Note
3021	Lutron	Diva	DVLV-600	600W	33% - 100%	Output maxes at 50% dimming level
		Skylark	SLV-600P	600W	28% - 100%	Output maxes at 50% dimming level
		Skylark	S-10P	1000W		Not recommended

*Low end of this range is determined by output current which may not directly translate to the perceived light output

WAC Lighting fixtures are compatible with a variety of dimmers. For your convenience we have included a compatibility chart showing dimmers which have been tested with our products. The recommended list below is based upon testing conducted in a lab, and the results can vary in certain field applications due to a number of factors. Exclusion from the list does not imply incompatibility, just that it has not been tested by WAC Lighting. Please reference the dimmer manufacturer's instructions for installation, or contact a WAC lighting professional at 800-526-2588.

waclighting.com
Phone (800) 526.2588
Fax (800) 526.2585

Headquarters/Eastern Distribution Center
44 Harbor Park Drive
Port Washington, NY 11050

Central Distribution Center
1600 Distribution Ct
Lithia Springs, GA 30122

Western Distribution Center
1750 Archibald Avenue
Ontario, CA 91760

DECK & PATIO - RECTANGLE

3031

WAC

LANDSCAPE LIGHTING

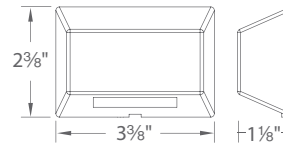


Fixture Type:

Catalog Number:

Project: _____

Location: _____



PRODUCT DESCRIPTION

Deck and patio light with superb forward-throw light distribution

FEATURES

- IP66 rated, Protected against powerful water jets
- Translucent lens provides for uniform diffused light output
- Solid diecast brass or corrosion resistant aluminum alloy
- ADA compliant
- Maintains constant lumen output against voltage drop
- UL 1838 Listed

SPECIFICATIONS

Input: 9-15VAC (Transformer is required)
Power: 2.8W / 4.6VA
Brightness: 75 lm
CRI: 90+
Rated Life: 50,000 hours

ORDERING NUMBER

		Color Temp	Finish
3031	<i>Rectangle</i>	27 2700K	BBR <i>Bronze on Brass</i>
		30 3000K	BK <i>Black on Aluminum</i>
			BZ <i>Bronze on Aluminum</i>
			WT <i>White on Aluminum</i>

3031-_____

Example: **3031-30BZ**

waclighting.com
Phone (800) 526.2588
Fax (800) 526.2585

Headquarters/Eastern Distribution Center
44 Harbor Park Drive
Port Washington, NY 11050

Central Distribution Center
1600 Distribution Ct
Lithia Springs, GA 30122

Western Distribution Center
1750 Archibald Avenue
Ontario, CA 91760

DECK & PATIO - RECTANGLE

3031

WAC
LANDSCAPE LIGHTING

Magnetic Transformers

Stainless Steel, 12-15V output, IP65 rated, UL 1838 listed
See transformer spec sheet for details and its accessories

9075-TRN-SS
75W Max

9150-TRN-SS
150W Max

9300-TRN-SS
300W Max

9600-TRN-SS
600W Max



TESTED MAGNETIC LOW VOLTAGE (MLV) DIMMERS

Luminaire	Dimmer					
	Manufacturer	Family	Model	Power Rating	Range*	Note
3031	Lutron	Diva	DVLV-600	600W	33% - 100%	Output maxes at 50% dimming level
		Skylark	SLV-600P	600W	28% - 100%	Output maxes at 50% dimming level
		Skylark	S-10P	1000W		Not recommended

*Low end of this range is determined by output current which may not directly translate to the perceived light output

WAC Lighting fixtures are compatible with a variety of dimmers. For your convenience we have included a compatibility chart showing dimmers which have been tested with our products. The recommended list below is based upon testing conducted in a lab, and the results can vary in certain field applications due to a number of factors. Exclusion from the list does not imply incompatibility, just that it has not been tested by WAC Lighting. Please reference the dimmer manufacturer's instructions for installation, or contact a WAC lighting professional at 800-526-2588.

waclighting.com
Phone (800) 526.2588
Fax (800) 526.2585

Headquarters/Eastern Distribution Center
44 Harbor Park Drive
Port Washington, NY 11050

Central Distribution Center
1600 Distribution Ct
Lithia Springs, GA 30122

Western Distribution Center
1750 Archibald Avenue
Ontario, CA 91760