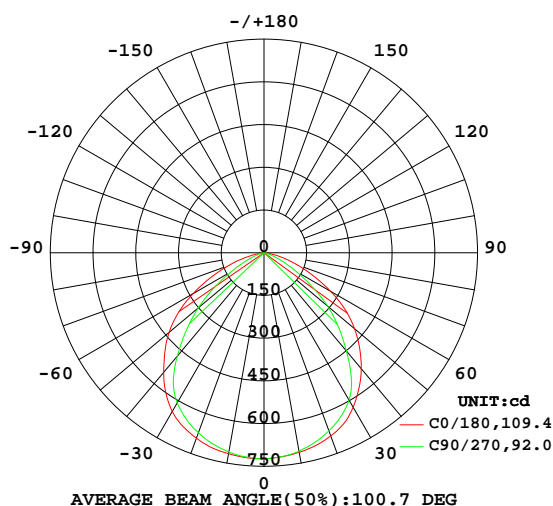


LUMINAIRE PHOTOMETRIC TEST REPORT

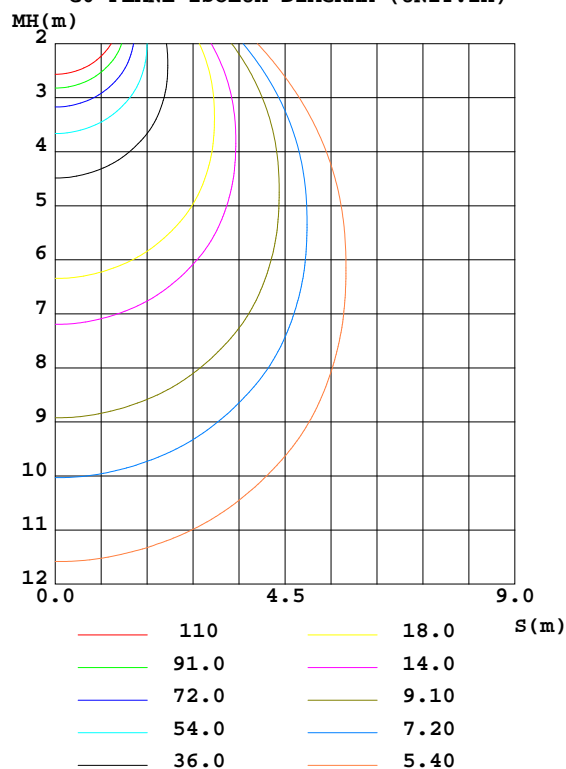
Test:U:120.03V I:0.2004A P:23.765W PF:0.9879 Freq:59.99Hz Lamp Flux:1695.49x1 lm		
NAME: 5222-30BZ(6X5-24W)	TYPE:Surface-mounted Luminaire	HEIGHT:
SPEC.:	DIM.:	SERIAL No.:
MFR.: WAC Lighting	SUR.:	Shielding Angle:

DATA OF LAMP		PHOTOMETRIC DATA				Eff: 71.34 lm/W
MODEL		Imax(cd)	723.8	S/MH(C0/180)	1.28	
NOMINAL POWER(W)		LOR(%)	100.0	S/MH(C90/270)	1.23	
RATED VOLTAGE(V)	120	TOTAL FLUX(lm)	1695.5	η UP,DN(C0-180)	0.0,50.4	
NOMINAL FLUX(lm)	1695.49	CIE CLASS	DIRECT	η UP,DN(C180-360)	0.1,49.5	
LAMPS INSIDE	1	η up(%)	0.1	CIBSE SHR NOM	1.25	
TEST VOLTAGE(V)	120	η down(%)	99.9	CIBSE SHR MAX	1.35	

LUMINOUS INTENSITY DISTRIBUTION DIAGRAM



C0 PLANE ISOLUX DIAGRAM (UNIT:lx)



C Range: 0 - 360DEG
 C Interval: 22.5DEG
 Test Speed: HIGH
 Temperature:25.3DEG
 Operators:Oliver
 Test Date:2019-11-19

γ Range: 0 - 180DEG
 γ Interval: 1.0DEG
 Test System:EVERFINE GO-R5000_V2 SYSTEM V2.0.366
 Humidity:65.0%
 Test Distance:2.499m [K=1.0000]
 Remarks:

ZONAL FLUX DIAGRAM

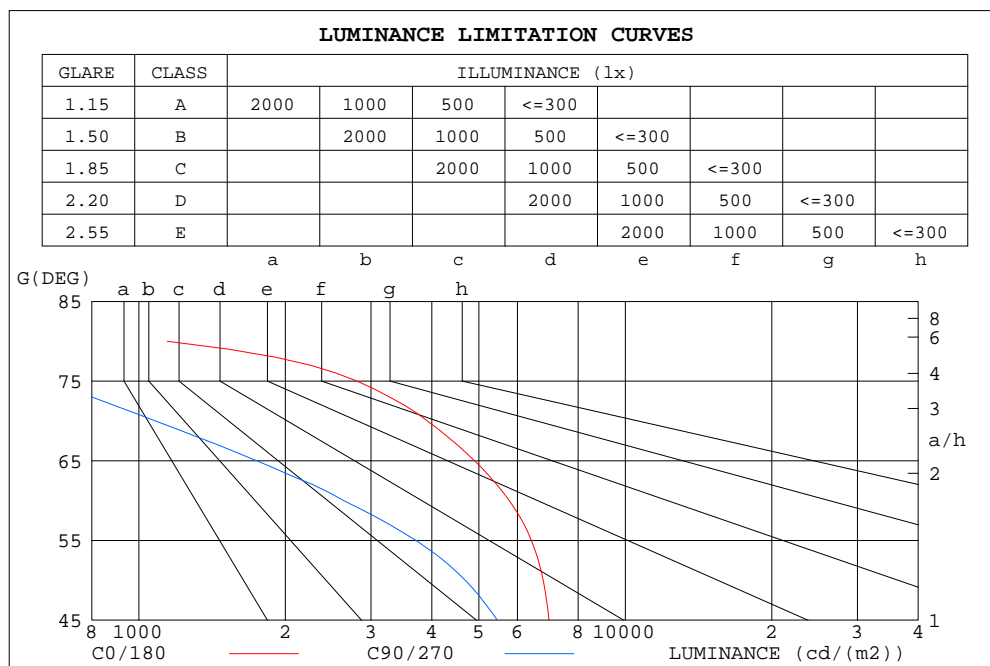
ZONAL FLUX DIAGRAM:

γ	C0	C45	C90	C135	C180	C225	C270	C315	γ	Φ zone	Φ total	$\%lum, lamp$
10	716.4	714.9	710.3	711.7	711.7	708.9	707.4	712.5	0- 10	68.47	68.47	4.04,4.04
20	693.1	684.7	673.2	677.4	684.8	672.4	666.0	680.0	10- 20	197.2	265.7	15.7,15.7
30	643.9	625.4	609.2	615.9	626.0	609.0	597.0	618.2	20- 30	300.7	566.3	33.4,33.4
40	548.1	533.6	473.5	521.2	531.3	508.0	450.4	525.2	30- 40	356.4	922.7	54.4,54.4
50	435.3	380.8	301.5	369.5	415.7	352.5	291.3	372.6	40- 50	339.4	1262	74.4,74.4
60	288.3	198.8	131.8	188.3	269.7	183.4	129.3	199.4	50- 60	253.5	1516	89.4,89.4
70	133.8	71.62	36.97	66.41	123.1	65.10	36.15	72.42	60- 70	131.9	1647	97.2,97.2
80	19.83	12.63	5.939	12.19	22.11	13.57	6.467	15.21	70- 80	44.14	1692	99.8,99.8
90	0.0344	0.0209	0.0103	0.0207	0.0457	0.0254	0.0124	0.0357	80- 90	2.455	1694	99.9,99.9
100	0.0806	0.0320	0.0243	0.0393	0.0674	0.0440	0.0299	0.0457	90-100	0.0424	1694	99.9,99.9
110	0.0869	0.0606	0.0546	0.0798	0.0960	0.0786	0.0641	0.0753	100-110	0.0605	1694	99.9,99.9
120	0.1496	0.1194	0.1168	0.1469	0.1873	0.1768	0.1581	0.1639	110-120	0.1082	1694	99.9,99.9
130	0.2433	0.2158	0.2196	0.2430	0.3378	0.3363	0.3147	0.3154	120-130	0.1893	1694	99.9,99.9
140	0.3204	0.3107	0.3224	0.3284	0.4954	0.4997	0.4917	0.4788	130-140	0.2645	1695	100,100
150	0.4226	0.4318	0.4546	0.4431	0.6265	0.6390	0.6545	0.6302	140-150	0.2961	1695	100,100
160	0.4937	0.5115	0.5415	0.5192	0.6984	0.7159	0.7524	0.7376	150-160	0.2696	1695	100,100
170	0.5558	0.5779	0.6080	0.5853	0.7018	0.7130	0.7520	0.7509	160-170	0.1807	1695	100,100
180	0.6878	0.7019	0.7217	0.7026	0.6834	0.6877	0.7139	0.7174	170-180	0.0651	1695	100,100
DEG	LUMINOUS INTENSITY:cd									UNIT:lm		

C Range: 0 - 360DEG
 C Interval: 22.5DEG
 Test Speed: HIGH
 Temperature:25.3DEG
 Operators:Oliver
 Test Date:2019-11-19

γ Range: 0 - 180DEG
 γ Interval: 1.0DEG
 γ Test System:EVERFINE GO-R5000_V2 SYSTEM V2.0.366
 Humidity:65.0%
 Test Distance:2.499m [K=1.0000]
 Remarks:

LUMINANCE LIMITATION CURVES



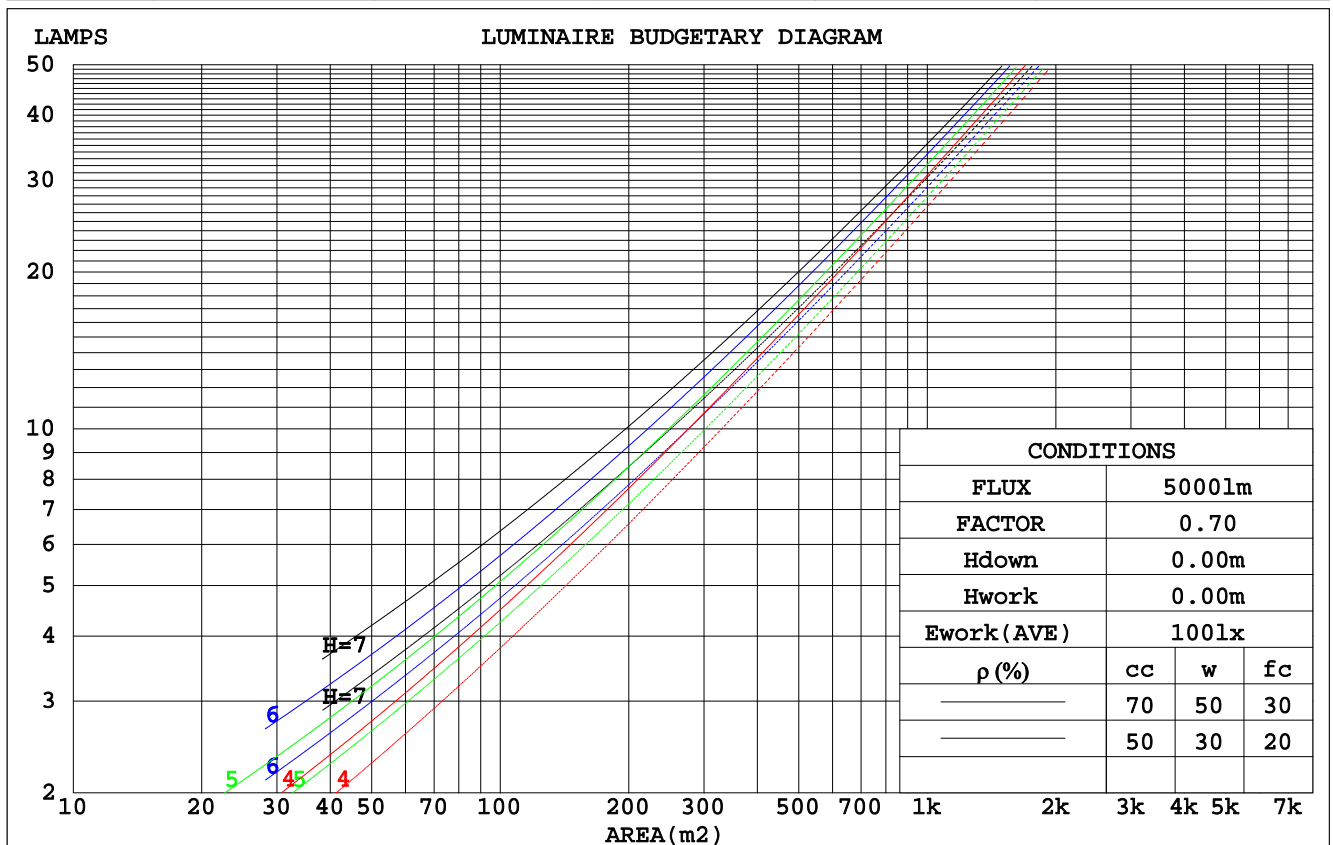
LUMINANCE cd/(m2)		
G(DEG)	C0/180	C90/270
85	24	5
80	1143	342
75	2808	653
70	3916	1081
65	4900	1747
60	5773	2637
55	6411	3714
50	6779	4691
45	6968	5459

C Range: 0 - 360DEG
C Interval: 22.5DEG
Test Speed: HIGH
Temperature: 25.3DEG
Operators: Oliver
Test Date: 2019-11-19

γ Range: 0 - 180DEG
 γ Interval: 1.0DEG
Test System: EVERFINE GO-R5000_V2 SYSTEM V2.0.366
Humidity: 65.0%
Test Distance: 2.499m [K=1.0000]
Remarks:

CU AND LUMINAIRE BUDGETARY ESTIMATE DIAGRAM

pcc	80%			70%			50%			30%			10%			0
ρw	50%	30%	10%	50%	30%	10%	50%	30%	10%	50%	30%	10%	50%	30%	10%	0
ρfc	20%			20%			20%			20%			20%			0
RCR	RCR:Room Cavity Ratio						Coefficients of Utilization(CU)									
0.0	1.19	1.19	1.19	1.16	1.16	1.16	1.11	1.11	1.11	1.06	1.06	1.06	1.02	1.02	1.02	.00
1.0	1.07	1.03	.00	1.04	1.01	.98	1.00	.98	.95	.96	.94	.92	.93	.91	.90	.88
2.0	.95	.89	.84	.93	.88	.83	.90	.85	.81	.86	.83	.79	.83	.80	.78	.76
3.0	.84	.77	.72	.83	.76	.71	.80	.74	.70	.77	.73	.68	.75	.71	.67	.65
4.0	.76	.68	.62	.74	.67	.61	.72	.65	.60	.70	.64	.60	.68	.63	.59	.57
5.0	.68	.60	.54	.67	.59	.53	.65	.58	.53	.63	.57	.52	.61	.56	.52	.50
6.0	.62	.53	.47	.61	.53	.47	.59	.52	.47	.57	.51	.46	.56	.50	.46	.44
7.0	.56	.48	.42	.55	.48	.42	.54	.47	.42	.52	.46	.41	.51	.45	.41	.39
8.0	.51	.43	.38	.51	.43	.38	.49	.42	.37	.48	.42	.37	.47	.41	.37	.35
9.0	.47	.39	.34	.47	.39	.34	.46	.39	.34	.44	.38	.34	.43	.38	.34	.32
10.0	.44	.36	.31	.43	.36	.31	.42	.35	.31	.41	.35	.31	.40	.35	.31	.29



C Range: 0 - 360DEG
 C Interval: 22.5DEG
 Test Speed: HIGH
 Temperature: 25.3DEG
 Operators: Oliver
 Test Date: 2019-11-19

γ Range: 0 - 180DEG
 γ Interval: 1.0DEG
 Test System: EVERFINE GO-R5000_V2 SYSTEM V2.0.366
 Humidity: 65.0%
 Test Distance: 2.499m [K=1.0000]
 Remarks:

WEC AND CCEC

pcc	80%			70%			50%			30%			10%			0
pw	50%	30%	10%	50%	30%	10%	50%	30%	10%	50%	30%	10%	50%	30%	10%	0
pfc	20%			20%			20%			20%			20%			0
RCR	RCR:Room Cavity Ratio						Wall Exitance Coefficients(WEC)									
0.0																
1.0	.255	.145	.046	.248	.141	.045	.235	.135	.043	.223	.129	.041	.212	.123	.040	
2.0	.249	.137	.042	.243	.134	.041	.232	.129	.040	.222	.124	.039	.212	.120	.038	
3.0	.237	.126	.038	.232	.124	.037	.222	.120	.037	.213	.116	.036	.204	.113	.035	
4.0	.223	.116	.034	.219	.114	.034	.210	.111	.033	.202	.108	.033	.194	.105	.032	
5.0	.210	.107	.031	.206	.106	.031	.198	.103	.030	.190	.100	.030	.184	.098	.029	
6.0	.197	.099	.028	.193	.098	.028	.186	.095	.028	.180	.093	.027	.174	.091	.027	
7.0	.185	.092	.026	.182	.091	.026	.176	.089	.026	.170	.087	.025	.164	.085	.025	
8.0	.174	.085	.024	.171	.084	.024	.166	.083	.024	.160	.081	.023	.156	.080	.023	
9.0	.164	.080	.022	.162	.079	.022	.157	.078	.022	.152	.076	.022	.148	.075	.022	
10.0	.156	.075	.021	.153	.074	.021	.149	.073	.021	.144	.072	.020	.140	.071	.020	

pcc	80%			70%			50%			30%			10%			0
pw	50%	30%	10%	50%	30%	10%	50%	30%	10%	50%	30%	10%	50%	30%	10%	0
pfc	20%			20%			20%			20%			20%			0
RCR	RCR:Room Cavity Ratio						Ceiling Cavity Exitance Coefficients(CCEC)									
0.0	.191	.191	.191	.163	.163	.163	.111	.111	.111	.064	.064	.064	.020	.020	.020	
1.0	.177	.157	.139	.152	.135	.120	.104	.093	.083	.060	.054	.048	.019	.017	.016	
2.0	.167	.133	.104	.143	.114	.090	.098	.079	.063	.057	.046	.037	.018	.015	.012	
3.0	.159	.115	.080	.136	.099	.069	.093	.069	.048	.054	.040	.029	.017	.013	.009	
4.0	.151	.101	.063	.130	.087	.055	.089	.061	.038	.052	.036	.023	.017	.012	.007	
5.0	.144	.090	.051	.124	.078	.044	.085	.055	.031	.049	.032	.019	.016	.010	.006	
6.0	.137	.082	.042	.118	.071	.037	.081	.050	.026	.047	.029	.015	.015	.010	.005	
7.0	.131	.075	.036	.113	.065	.031	.078	.046	.022	.045	.027	.013	.015	.009	.004	
8.0	.125	.069	.031	.108	.060	.027	.074	.042	.019	.043	.025	.011	.014	.008	.004	
9.0	.119	.064	.027	.103	.056	.024	.071	.039	.017	.041	.023	.010	.013	.008	.003	
10.0	.114	.060	.024	.098	.052	.021	.068	.037	.015	.040	.022	.009	.013	.007	.003	

C Range: 0 - 360DEG
 C Interval: 22.5DEG
 Test Speed: HIGH
 Temperature: 25.3DEG
 Operators: Oliver
 Test Date: 2019-11-19

γ Range: 0 - 180DEG
 γ Interval: 1.0DEG
 Test System: EVERFINE GO-R5000_V2 SYSTEM V2.0.366
 Humidity: 65.0%
 Test Distance: 2.499m [K=1.0000]
 Remarks:

UGR(Unified Glare Rating) Table

ceiling/cavity	0.7	0.7	0.5	0.5	0.3	0.7	0.7	0.5	0.5	0.3
walls	0.5	0.3	0.5	0.3	0.3	0.5	0.3	0.5	0.3	0.3
working plane	0.2	0.2	0.2	0.2	0.2	0.2	0.2	0.2	0.2	0.2
Room dimensions	Viewed crosswise					Viewed endwise				
x = 2H y = 2H	17.6	19.0	17.9	19.2	19.4	15.2	16.6	15.4	16.8	16.9
3H	18.5	19.8	18.8	20.0	20.2	15.3	16.6	15.6	16.8	17.0
4H	18.7	19.9	19.0	20.2	20.4	15.2	16.4	15.6	16.7	16.9
6H	18.7	19.9	19.1	20.1	20.4	15.2	16.3	15.5	16.6	16.8
8H	18.7	19.8	19.0	20.0	20.3	15.1	16.2	15.5	16.5	16.8
12H	18.6	19.7	19.0	20.0	20.3	15.1	16.1	15.4	16.4	16.7
4H 2H	17.7	18.9	18.0	19.2	19.4	15.6	16.8	15.9	17.1	17.3
3H	18.7	19.8	19.1	20.1	20.3	15.8	16.9	16.2	17.1	17.4
4H	19.0	19.9	19.4	20.3	20.6	15.8	16.8	16.2	17.1	17.4
6H	19.1	19.9	19.5	20.2	20.6	15.8	16.6	16.1	16.9	17.3
8H	19.0	19.8	19.4	20.2	20.5	15.7	16.5	16.1	16.8	17.2
12H	19.0	19.7	19.4	20.1	20.5	15.7	16.4	16.1	16.7	17.2
8H 4H	18.9	19.7	19.3	20.1	20.4	15.9	16.6	16.3	17.0	17.4
6H	19.0	19.6	19.5	20.0	20.5	15.8	16.5	16.3	16.9	17.3
8H	19.0	19.5	19.4	20.0	20.4	15.8	16.4	16.3	16.8	17.2
12H	18.9	19.4	19.4	19.9	20.3	15.8	16.2	16.2	16.7	17.2
12H 4H	18.9	19.6	19.3	20.0	20.4	15.8	16.5	16.3	16.9	17.3
6H	19.0	19.5	19.4	19.9	20.4	15.8	16.4	16.3	16.8	17.2
8H	18.9	19.4	19.4	19.9	20.3	15.8	16.2	16.3	16.7	17.2
Variations with the observer position at spacings:										
S = 1.0H	+ 0.3 / - 0.4					+ 0.9 / - 1.2				
1.5H	+ 0.3 / - 0.5					+ 0.4 / - 0.6				
2.0H	+ 0.9 / - 1.1					+ 1.3 / - 2.2				

CIE Pub.117, 1695 lm Total Lamp Luminous Flux Correct ($8\log(F/F_0) = 1.8$)

C Range: 0 - 360DEG
 C Interval: 22.5DEG
 Test Speed: HIGH
 Temperature: 25.3DEG
 Operators: Oliver
 Test Date: 2019-11-19

γ Range: 0 - 180DEG
 γ Interval: 1.0DEG
 Test System: EVERFINE GO-R5000_V2 SYSTEM V2.0.366
 Humidity: 65.0%
 Test Distance: 2.499m [K=1.0000]
 Remarks:

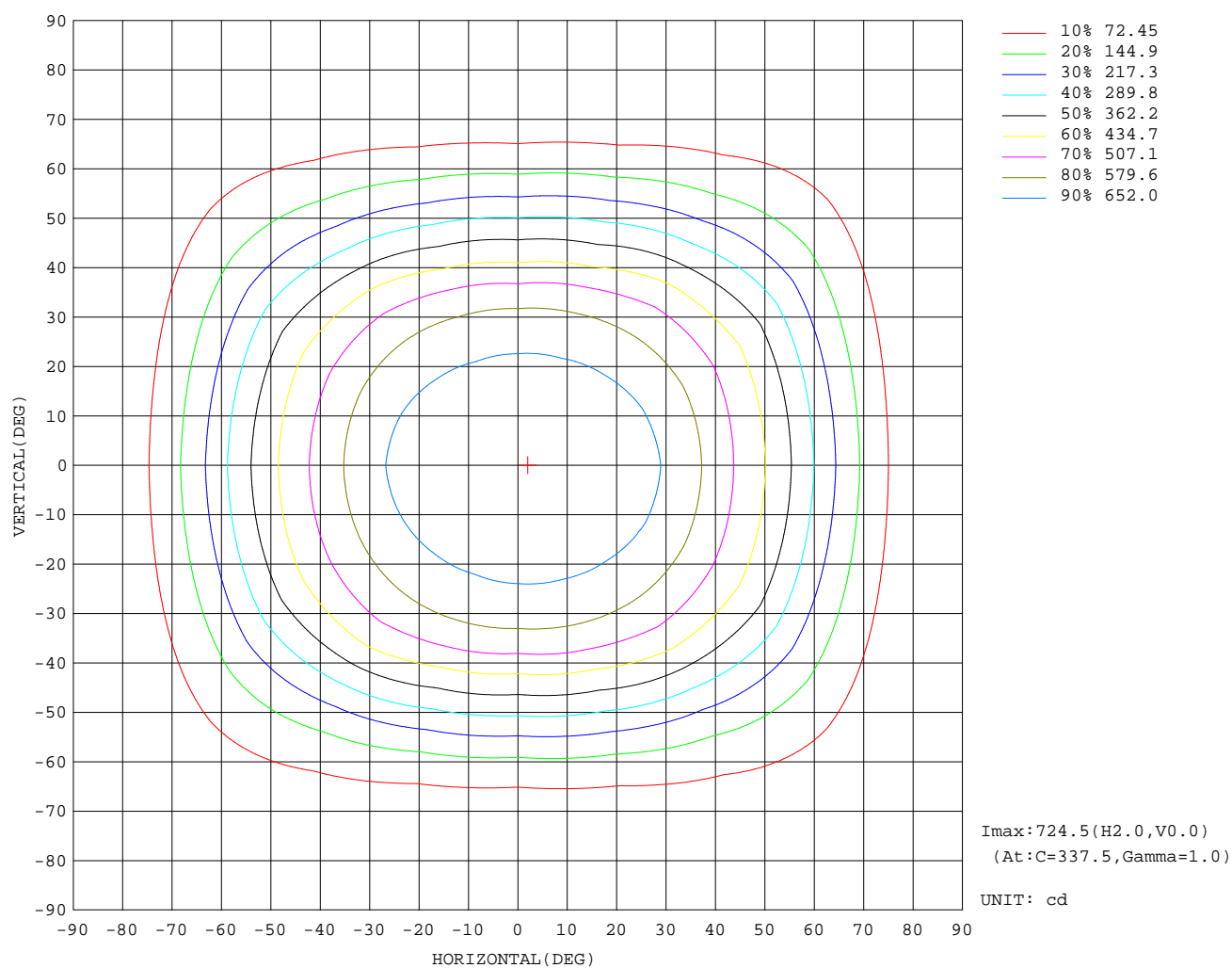
UTILIZATION FACTORS TABLE

REFLECTANCE										
Ceiling	0.8	0.8	0.8	0.7	0.7	0.7	0.5	0.5	0.5	0
Walls	0.7	0.5	0.3	0.7	0.5	0.3	0.7	0.5	0.3	0
Working plane	0.2	0.2	0.2	0.2	0.2	0.2	0.2	0.2	0.2	0
ROOM INDEX	UTILIZATION FACTORS(PERCENT) $k(RI) \times RCR = 5$									
$k = 0.60$	63	52	46	62	52	45	61	51	45	39
0.80	73	63	56	72	62	56	71	62	56	49
1.00	82	72	66	81	71	65	79	72	65	58
1.25	89	80	73	87	79	73	85	78	72	66
1.50	93	85	79	92	84	78	89	82	77	71
2.00	99	92	87	98	91	86	94	89	85	78
2.50	103	96	91	101	95	90	97	92	88	81
3.00	106	100	95	103	98	94	100	95	92	84
4.00	109	104	100	107	102	99	102	99	96	88
5.00	111	107	103	108	105	102	104	101	99	90
ROOM INDEX	UF(total)									Direct
According to DIN EN 13032-2 2004			Suspended					SHRNOM = 1.25		

C Range: 0 - 360DEG
 C Interval: 22.5DEG
 Test Speed: HIGH
 Temperature: 25.3DEG
 Operators: Oliver
 Test Date: 2019-11-19

γ Range: 0 - 180DEG
 γ Interval: 1.0DEG
 Test System: EVERFINE GO-R5000_V2 SYSTEM V2.0.366
 Humidity: 65.0%
 Test Distance: 2.499m [K=1.0000]
 Remarks:

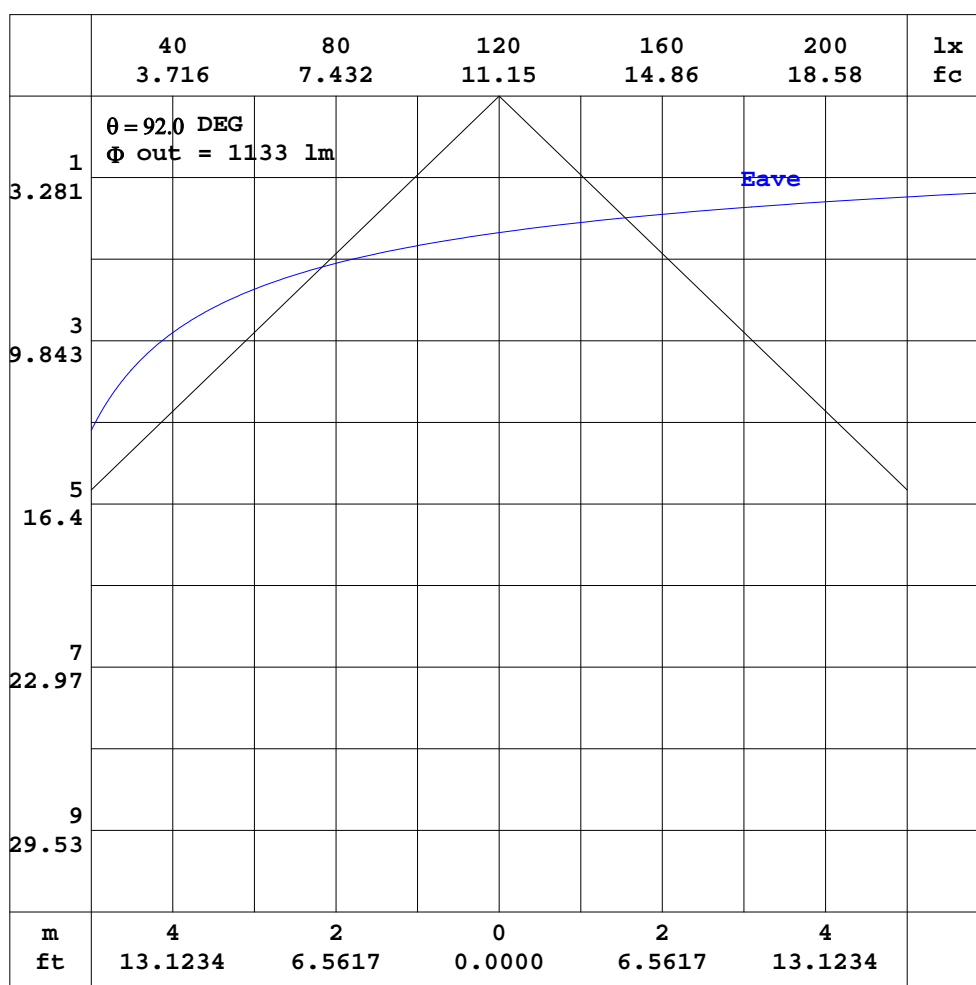
ISOCANDELA DIAGRAM



C Range: 0 - 360DEG
C Interval: 22.5DEG
Test Speed: HIGH
Temperature: 25.3DEG
Operators: Oliver
Test Date: 2019-11-19

γ Range: 0 - 180DEG
 γ Interval: 1.0DEG
Test System: EVERFINE GO-R5000_V2 SYSTEM V2.0.366
Humidity: 65.0%
Test Distance: 2.499m [K=1.0000]
Remarks:

AAI CURVES

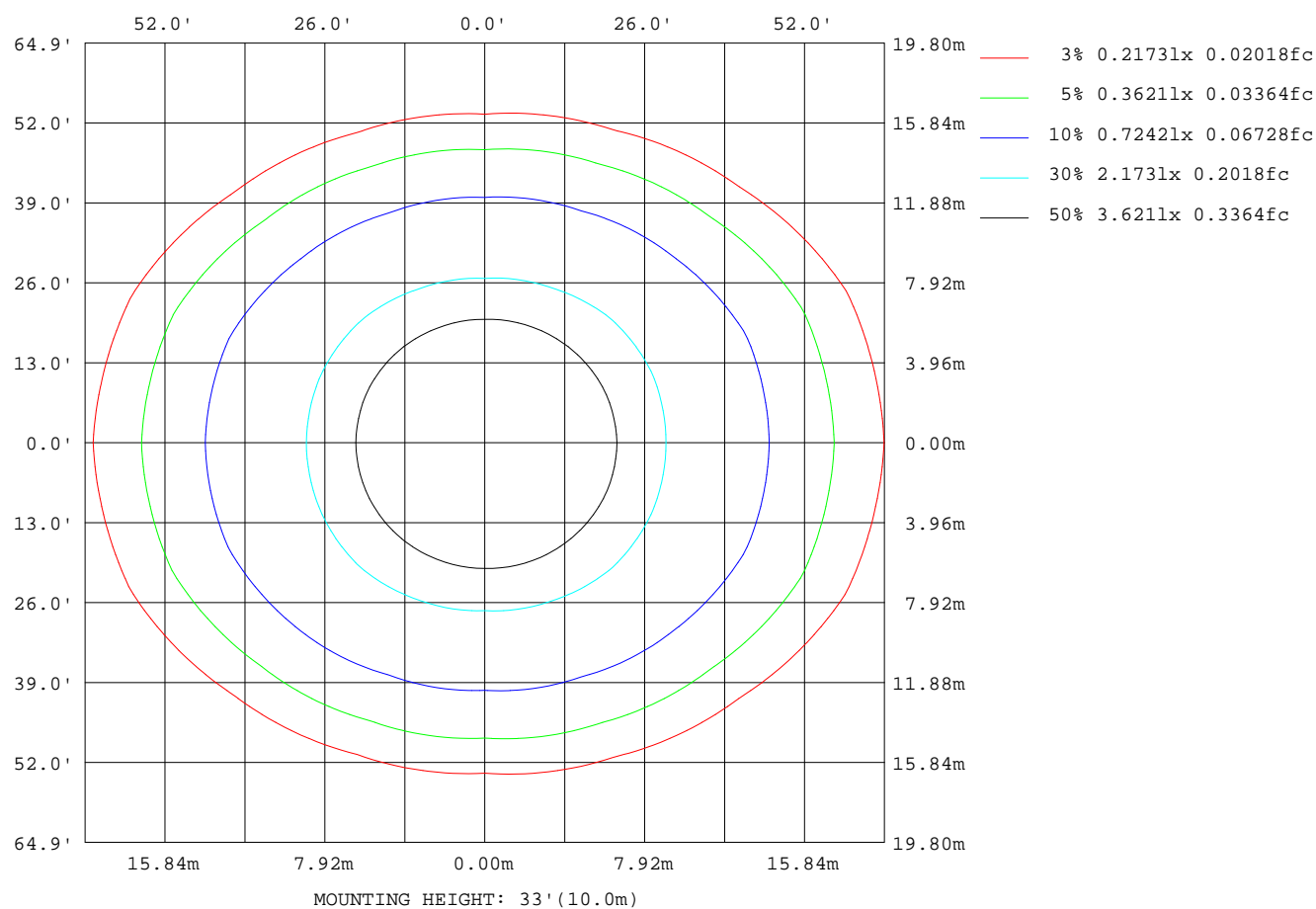


Note: The Curves indicate the illuminated area and the average illumination when the luminaire is at different distance.

C Range: 0 - 360DEG
 C Interval: 22.5DEG
 Test Speed: HIGH
 Temperature: 25.3DEG
 Operators: Oliver
 Test Date: 2019-11-19

γ Range: 0 - 180DEG
 γ Interval: 1.0DEG
 Test System: EVERFINE GO-R5000_V2 SYSTEM V2.0.366
 Humidity: 65.0%
 Test Distance: 2.499m [K=1.0000]
 Remarks:

ISOLUX DIAGRAM



C Range: 0 - 360DEG
C Interval: 22.5DEG
Test Speed: HIGH
Temperature: 25.3DEG
Operators: Oliver
Test Date: 2019-11-19

γ Range: 0 - 180DEG
 γ Interval: 1.0DEG
Test System: EVERFINE GO-R5000_V2 SYSTEM V2.0.366
Humidity: 65.0%
Test Distance: 2.499m [K=1.0000]
Remarks:

LED Avg.L Report

Test:U:120.03V I:0.2004A P:23.765W PF:0.9879 Freq:59.99Hz Lamp Flux:1695.49x1 lm		
NAME: 5222-30BZ(6X5-24W)	TYPE:Surface-mounted Luminaire	HEIGHT:
SPEC.:	DIM.:	SERIAL No.:
MFR.: WAC Lighting	SUR.:	Shielding Angle:

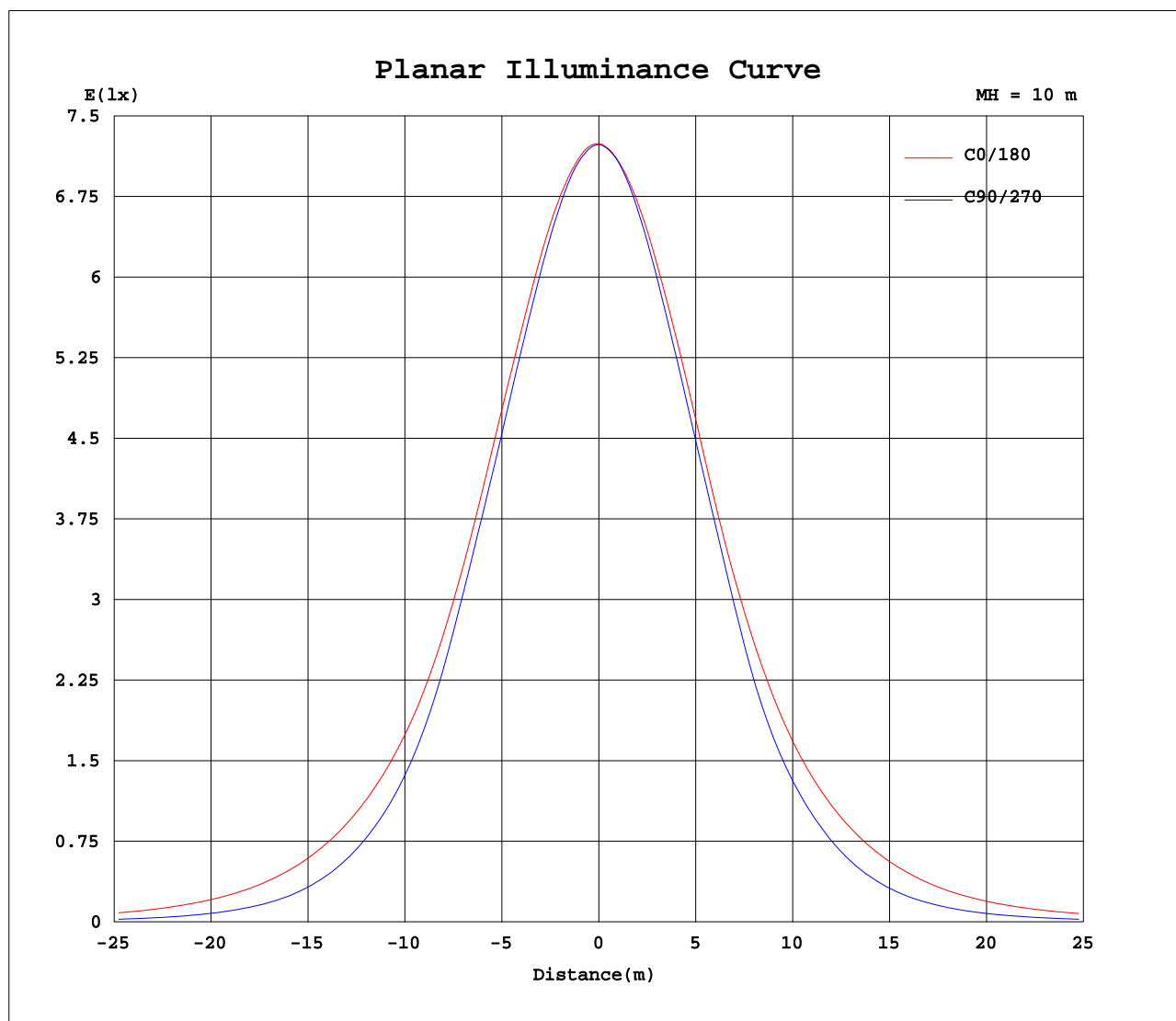
AvgL	cd/m2
L_0~180(65)av	4703
L_0~180(75)av	2736
L_0~180(85)av	26
L_90~270(65)av	1737
L_90~270(75)av	641
L_90~270(85)av	11
L_45(65)av	2876
L_45(75)av	1361
L_45(85)av	14

Standard: GB/T 29293-2012

C Range: 0 - 360DEG
 C Interval: 22.5DEG
 Test Speed: HIGH
 Temperature:25.3DEG
 Operators:Oliver
 Test Date:2019-11-19

γ Range: 0 - 180DEG
 γ Interval: 1.0DEG
 Test System:EVERFINE GO-R5000_V2 SYSTEM V2.0.366
 Humidity:65.0%
 Test Distance:2.499m [K=1.0000]
 Remarks:

Planar Illuminance Curve



C Range: 0 - 360DEG
C Interval: 22.5DEG
Test Speed: HIGH
Temperature: 25.3DEG
Operators: Oliver
Test Date: 2019-11-19

γ Range: 0 - 180DEG
 γ Interval: 1.0DEG
Test System: EVERFINE GO-R5000_V2 SYSTEM V2.0.366
Humidity: 65.0%
Test Distance: 2.499m [K=1.0000]
Remarks:

LUMINOUS DISTRIBUTION INTENSITY DATA

Table--1

UNIT: cd

C(DEG) γ (DEG)	0	22.5	45	67.5	90	112.5	135	157.5	180	202.5	225	247.5	270	292.5	315	337.5			
0	723	723	723	723	723	723	723	723	723	723	723	723	723	723	723	723			
5	722	721	721	720	720	720	720	719	719	718	718	718	719	721	721	722			
10	716	717	715	712	710	711	712	711	712	710	709	707	707	710	712	715			
15	708	708	703	698	695	695	698	700	701	699	694	691	689	692	699	705			
20	693	692	685	677	673	673	677	682	685	680	672	667	666	671	680	690			
25	673	671	659	650	645	645	649	657	662	655	645	636	636	642	653	667			
30	644	638	625	616	609	610	616	622	626	620	609	599	597	606	618	636			
35	601	597	585	570	555	564	573	579	581	577	564	547	535	555	577	595			
40	548	548	534	498	473	491	521	529	531	525	508	469	450	477	525	548			
45	492	491	467	410	386	403	455	473	475	470	437	386	371	392	457	492			
50	435	431	381	324	301	316	369	411	416	407	352	306	291	314	373	432			
55	367	358	287	235	213	229	277	337	348	333	264	221	205	230	283	360			
60	288	272	199	152	132	146	188	253	270	250	183	143	129	149	199	275			
65	207	187	126	87.7	73.8	83.4	118	172	191	170	115	83.0	73.0	86.9	127	191			
70	134	118	71.6	45.9	37.0	43.4	66.4	107	123	105	65.1	43.1	36.1	45.1	72.4	120			
75	72.6	62.6	36.6	21.6	16.9	20.4	33.7	57.0	69.0	57.5	33.3	20.1	16.3	21.1	37.3	65.7			
80	19.8	17.4	12.6	8.74	5.94	8.24	12.2	16.2	22.1	19.3	13.6	8.23	6.47	8.62	15.2	22.6			
85	0.21	0.18	0.09	0.05	0.04	0.05	0.09	0.15	0.25	0.21	0.14	0.14	0.15	0.17	0.16	0.22			
90	0.03	0.03	0.02	0.01	0.01	0.01	0.02	0.03	0.05	0.04	0.03	0.02	0.01	0.02	0.04	0.06			
95	0.08	0.07	0.03	0.02	0.01	0.02	0.03	0.04	0.06	0.05	0.04	0.02	0.02	0.03	0.04	0.07			
100	0.08	0.07	0.03	0.03	0.02	0.03	0.04	0.05	0.07	0.06	0.04	0.03	0.03	0.04	0.05	0.07			
105	0.08	0.07	0.05	0.04	0.04	0.04	0.06	0.07	0.08	0.07	0.06	0.04	0.04	0.04	0.05	0.07			
110	0.09	0.08	0.06	0.05	0.05	0.06	0.08	0.09	0.10	0.09	0.08	0.07	0.06	0.07	0.08	0.09			
115	0.11	0.11	0.09	0.08	0.08	0.09	0.11	0.12	0.13	0.13	0.12	0.11	0.10	0.10	0.11	0.12			
120	0.15	0.14	0.12	0.11	0.12	0.13	0.15	0.16	0.19	0.19	0.18	0.16	0.16	0.16	0.16	0.17			
125	0.19	0.18	0.17	0.16	0.16	0.18	0.19	0.21	0.26	0.26	0.25	0.24	0.23	0.23	0.23	0.24			
130	0.24	0.23	0.22	0.21	0.22	0.23	0.24	0.26	0.34	0.34	0.34	0.33	0.31	0.31	0.32	0.32			
135	0.28	0.27	0.26	0.26	0.27	0.28	0.29	0.30	0.42	0.43	0.42	0.42	0.41	0.40	0.40	0.40			
140	0.32	0.31	0.31	0.31	0.32	0.33	0.33	0.34	0.50	0.50	0.50	0.50	0.49	0.49	0.48	0.48			
145	0.37	0.37	0.37	0.38	0.39	0.39	0.39	0.39	0.56	0.57	0.58	0.58	0.58	0.57	0.56	0.56			
150	0.42	0.42	0.43	0.44	0.45	0.45	0.44	0.44	0.63	0.63	0.64	0.65	0.65	0.65	0.63	0.62			
155	0.46	0.46	0.48	0.50	0.50	0.50	0.49	0.48	0.67	0.68	0.69	0.70	0.71	0.71	0.69	0.68			
160	0.49	0.50	0.51	0.53	0.54	0.54	0.52	0.50	0.70	0.70	0.72	0.73	0.75	0.75	0.74	0.71			
165	0.52	0.52	0.54	0.56	0.57	0.57	0.55	0.53	0.70	0.70	0.72	0.74	0.76	0.76	0.75	0.73			
170	0.56	0.56	0.58	0.60	0.61	0.60	0.59	0.56	0.70	0.70	0.71	0.73	0.75	0.76	0.75	0.73			
175	0.64	0.65	0.67	0.69	0.69	0.69	0.67	0.65	0.72	0.72	0.72	0.74	0.76	0.77	0.76	0.74			
180	0.69	0.69	0.70	0.72	0.72	0.72	0.70	0.69	0.68	0.68	0.69	0.70	0.71	0.72	0.72	0.70			

C Range: 0 - 360DEG
 C Interval: 22.5DEG
 Test Speed: HIGH
 Temperature: 25.3DEG
 Operators: Oliver
 Test Date: 2019-11-19

γ Range: 0 - 180DEG
 γ Interval: 1.0DEG
 Test System: EVERFINE GO-R5000_V2 SYSTEM V2.0.366
 Humidity: 65.0%
 Test Distance: 2.499m [K=1.0000]
 Remarks: